

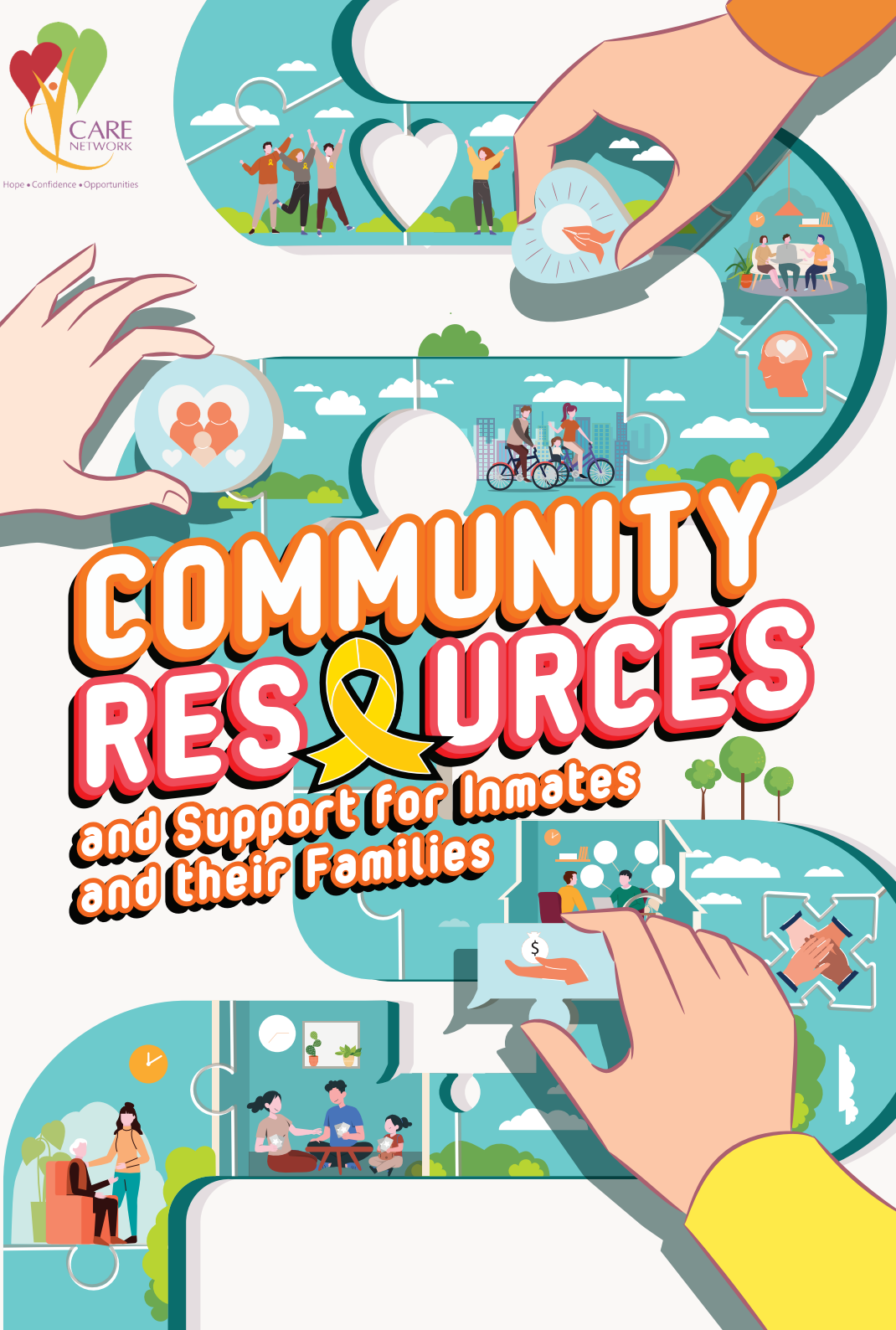


CARE  
NETWORK

Hope • Confidence • Opportunities

# COMMUNITY RESOURCES

and Support for Inmates  
and their Families



# Overview of Services



Financial



Accommodation



Employment




Support



Services

 For **Ex-Offenders Only**

 For **Ex-Offenders & Families**



## Financial Assistance

ComCare

ISCOS



## Shelter/ Accommodation

MSF Shelter Options, Transitional Shelters, Halfway Houses and HDB



## Employment

YRSG, ServiceSG



## Support in the Community

CARE Network, Community and Family Programmes, Desistor Network, Help Against Family Violence, Religious Organisations, Self-Help Groups and Associations, ServiceSG



## Health

Addiction Treatment/Support Groups, Mental Health Services, Nursing Homes

Categories	Page
CARE Network Members	4
Addiction Treatment / Support Groups	5
Self Help Groups and Associations	6
Religious Organisations	7
Mental Health Services	8
Help Against Family Violence	9
Nursing Homes	9
i. Accommodation ii. Halfway Houses and Shelters iii. MSF Shelter Options	10 – 12
Community and Family Services	13 – 14
ComCare	14 – 15
ServiceSG	16
Desistor Network – Support Groups for Desistors	
Scan the QR code to see the list of resources <a href="https://www.sps.gov.sg/learn-about-corrections/resources-for-desistors/">https://www.sps.gov.sg/learn-about-corrections/resources-for-desistors/</a>	

All information is correct as of Oct 2024. Please note that the services listed are non-exhaustive.





# CARE Network Members

The Community Action for the Rehabilitation of Ex-offenders (CARE) Network is an alliance of various Social Service Agencies (SSAs) and Government Organisations coming together to engage the community and coordinate efforts to better support ex-offenders and their families.

Agency	Address	Contact
Industrial & Services Co-operative Society Ltd (ISCOS) <a href="https://www.iscos.org.sg">https://www.iscos.org.sg</a>	Just BrewIN 452 Race Course Road Singapore 218696	6743 7885
NeuGen Fund <a href="https://www.neugen.org.sg">https://www.neugen.org.sg</a>	Just BrewIN 452 Race Course Road Singapore 218696	6743 7885
Singapore After-Care Association (SACA) <a href="https://www.saca.org.sg">https://www.saca.org.sg</a>	81 Dunlop Street Singapore 209408	6294 2350 6294 2763
Singapore Anti-Narcotics Association (SANA) <a href="https://www.sana.org.sg/step-up-centre/">https://www.sana.org.sg/step-up-centre/</a>	<b>Step-Up @ Sengkang</b> Sengkang Community Hub, 2 Sengkang Square #05-01, Singapore 545025 Mon, Tues, Wed & Fri: 9am – 6pm, Thu: 9am – 9pm  <b>Step-Up @ Taman Jurong</b> SSO @ Taman Jurong, 301A Corporation Drive, Level 1, Singapore 619773 Mon, Wed & Fri: 9am – 6pm, Thu: 2pm – 9pm  <b>Step-Up @ Northwest</b> ACE The Place Community Club 120 Woodlands Avenue 1, Level 4, Singapore 739069 Mon, Wed & Fri: 9am – 6pm, Thu: 2pm – 9pm	6732 1122*  9847 5102*  8666 6076*
Yellow Ribbon Singapore (YRSG) <a href="https://www.yellowribbon.gov.sg/what-we-do/employment-assistance">https://www.yellowribbon.gov.sg/what-we-do/employment-assistance</a>	1821 Upper Changi Road North, Selarang Park Complex (SPC), Singapore 506777	6513 1537
Yellow Ribbon Fund (YRF) <a href="https://www.yellowribbon.gov.sg/yellow-ribbon-fund">https://www.yellowribbon.gov.sg/yellow-ribbon-fund</a>	980 Upper Changi Road North Blk B, Level 2, Singapore 507708 (Singapore Prison Service and Yellow Ribbon Singapore HQ)	6214 2867

\*(Please call or text to make an appointment)

# Addiction Treatment / Support Groups



Agency	Address	Contact
Alcoholics Anonymous (AA) <a href="https://www.singaporeaa.org/meetings.html">https://www.singaporeaa.org/meetings.html</a>	Various Locations – Please refer to website	8112 8089 (call or whatsapp)
Narcotics Anonymous (NA) <a href="https://nasingapore.org/meeting.htm">https://nasingapore.org/meeting.htm</a>	Various Locations – Please refer to website	8405 8432
National Addictions Management Service (NAMS) <a href="https://www.nams.sg/Pages/default.aspx">https://www.nams.sg/Pages/default.aspx</a>	Buangkok Green Medical Park Blk 9 (Level 1) 10 Buangkok View Singapore 539747	24-hr helpline: 6 – RECOVER (6-732 6837)
National Council on Problem Gambling <a href="https://www.ncpg.org.sg/">https://www.ncpg.org.sg/</a> (Webchat)	SLF Building 510 Thomson Road, #05-01, Singapore 298135	1800-6-668-668 Available daily from 8am to 11pm
WE CARE Community Services <a href="https://www.wecare.org.sg/">https://www.wecare.org.sg/</a>	Kembangan-Chai Chee Community Hub Blk 5, 11 Jalan Ubi Block 5 #01-41 Singapore 409074	3165 8017
WIRA (Women in Recovery Association) <a href="http://wira.org.sg/">http://wira.org.sg/</a>	65 Oxley Bizhub Ubi Road One #02-86 Singapore 408729	8339 7690





## Self Help Groups and Associations

Agency	Address	Contact
AMP Singapore <a href="https://www.amp.org.sg/">https://www.amp.org.sg/</a>	<b>AMP @ Pasir Ris</b> 1 Pasir Ris Drive 4 #05-11 Singapore 519457  <b>AMP @ Jurong Point</b> Jurong Point Shopping Centre 1 Jurong West Central 2 #06-02 Singapore 648886	6416 3966  6416 3990 / 9726 7655
Association of Women for Action and Research (AWARE) <a href="https://www.aware.org.sg/">https://www.aware.org.sg/</a>	Block 5 Dover Crescent, #01-22 Singapore 130005	6779 7137 Helpline: 1800 777 555
Chinese Development Assistance Council (CDAC) <a href="https://www.cdac.org.sg/en/">https://www.cdac.org.sg/en/</a>	65 Tanjong Katong Road Singapore 436957	6841 4889
Persatuan Pemuda Islam Singapura (PPIS) Family Service Centre (East) <a href="https://ppis.sg/family-services/">https://ppis.sg/family-services/</a>	Blk 1 Eunoss Crescent #01-2509 Singapore 400001	6015 6970
Singapore Indian Development Association (SINDA) <a href="https://www.sinda.org.sg/">https://www.sinda.org.sg/</a>	1 Beatty Road Singapore 209943	1800 295 3333
The Eurasian Association, Singapore <a href="https://www.eurasians.sg/">https://www.eurasians.sg/</a>	Eurasian Community House 139 Ceylon Road Singapore 429744	6447 1578
Yayasan MENDAKI <a href="https://www.mendaki.org.sg/">https://www.mendaki.org.sg/</a>	51 Kee Sun Avenue (off Tay Lian Teck Road) Singapore 457056	6245 5555



# Religious Organisations



Agency	Address	Contact
Buddhist Fellowship <a href="https://www.buddhistfellowship.org/programmes">https://www.buddhistfellowship.org/programmes</a>	Yeo's Building 2 Telok Blangah Street 31 #02-00 Singapore 108942	6278 0900
Christian Counselling Services <a href="http://ccslink.org/">http://ccslink.org/</a>	AsiaWide Industrial Building 5 Pereira Road #06-02 Singapore 368025	6222 1305
Family and Inmates ThRough-care Assistance Haven (FITRAH) <a href="https://www.facebook.com/fitrahsingapore/">https://www.facebook.com/fitrahsingapore/</a>	Masjid En-Naeem 120 Tampines Road Singapore 535136	6911 8153 6911 8154
Loving Hand Fellowship <a href="https://lhf.sg/">https://lhf.sg/</a>	37B Kallang Pudding Road #09-07 Tong Lee Building Singapore 349315	96315418
Muneeswaran Community Services Ltd <a href="https://www.mcs.org.sg">https://www.mcs.org.sg</a>	Peninsula Plaza, 111 North Bridge Road #08-10 Singapore 179098	9833 3515
PERGAS <a href="https://www.pergas.org.sg/">https://www.pergas.org.sg/</a>	Wisma Indah 448 Changi Road #03-01 Singapore 419975	6346 9350
Prison Fellowship Singapore <a href="https://pfs.org.sg/">https://pfs.org.sg/</a>	1 Dorset Road Singapore 219486	6384 2338
Roman Catholic Prison Ministry <a href="https://www.caritas-singapore.org/roman-catholic-prison-ministry-rcpm/">https://www.caritas-singapore.org/roman-catholic-prison-ministry-rcpm/</a>	Catholic Archdiocesan Education Centre 2 Highland Rd #03-04 Singapore 549102	6100 7276
SANA Hindu Religious Group of Volunteers (RGV) <a href="https://www.sana.org.sg/">https://www.sana.org.sg/</a>	Sengkang Community Hub 2 Sengkang Square #05-01 Singapore 545025	6870 5192 6870 5193
Sikh Welfare Council <a href="https://www.siwec.org/">https://www.siwec.org/</a>	2 Towner Road #06-02 Singapore 327804	6299 9234
Singapore Buddhist Federation <a href="https://www.buddhist.org.sg/">https://www.buddhist.org.sg/</a>	59 Lorong 24A Geylang Singapore 398583	6744 4635
The Hindu Centre <a href="https://www.hinducentre.org.sg/">https://www.hinducentre.org.sg/</a>	132 Owen Road Singapore 218935	6291 8540



## Mental Health Services

Agency	Address	Contact
Agency for Integrated Care (AIC) <a href="https://www.aic.sg">https://www.aic.sg</a>	Various Locations – Please refer to website	–
Club Heal <a href="http://www.clubheal.org.sg/">http://www.clubheal.org.sg/</a>	<b>Club HEAL @ Buangkok</b> The Hope Centre Blk 997A Buangkok Crescent #01-809 Singapore 531997 <b>Club HEAL @ Bukit Batok East</b> The Loving Hub Blk 254 Bukit Batok East Ave 4 #01-229 Singapore 650254 <b>Club HEAL @ Marsiling</b> The Empowerment Hut Blk 317 Woodlands St 31 #01-194 Singapore 730317 <b>Club HEAL @ Pasir Ris East</b> The Acceptance Place Blk 148 Pasir Ris St 13 #01-24 Singapore 510148	6899 3463 9 am to 5 pm, Mondays to Fridays
Institute of Mental Health (IMH) <a href="https://www.imh.com.sg/">https://www.imh.com.sg/</a>	Buangkok Green Medical Park 10 Buangkok View Singapore 539747	24-hr hotline: 6389 2000
Samaritans of Singapore (SOS) <a href="https://www.sos.org.sg/">https://www.sos.org.sg/</a>	10 Cantonment Close #01-01 Singapore 080010	24-hr hotline: 1-767 24-hr Whatsapp text: 9151 1767
Silver Ribbon (Singapore) <a href="https://www.silverribbonsingapore.com/">https://www.silverribbonsingapore.com/</a>	Blk 208 Serangoon Central #01-238 Singapore 550208	63861928 Mon-Fri,9am-5pm
Singapore Association for Mental Health (SAMH) <a href="https://www.samhealth.org.sg/">https://www.samhealth.org.sg/</a>	Blk 139 Potong Pasir Ave 3 #01-136 Singapore 350139	6255 3222 Toll Free Helpline: 1800 283 7019



# Help Against Family Violence



Agency	Address	Contact
National Anti-Violence and Sexual Harassment Helpline <a href="https://www.msf.gov.sg/what-we-do/break-the-silence/home">https://www.msf.gov.sg/what-we-do/break-the-silence/home</a>	-	1800-777-000 Available 24 hours
Care Corner Project StART <a href="https://www.carecorner.org.sg/family-violence-protection">https://www.carecorner.org.sg/family-violence-protection</a>	7A Commonwealth Ave #01-672 Singapore 141007	6476 1482
PAVE <a href="https://www.pave.org.sg/">https://www.pave.org.sg/</a>	Blk 211 Ang Mo Kio Ave 3 #01-1446 Singapore 560211 Blk 305 Yishun Central #01-175 Singapore 760305	6555 0390
TRANS SAFE Centre <a href="https://www.trans.org.sg/services-safe">https://www.trans.org.sg/services-safe</a>	Blk 410 Bedok North Ave 2 #01-58 Singapore 460410	6449 9088

# Nursing Home



Nursing Homes are long-term residential care facilities that provide assistance to residents who need help in most of their activities of daily living and/or have daily nursing care needs.

A nursing home provides the following services:



## Help With Activities of Daily Living

This includes going to the toilet, showering and eating, etc.



## For Dementia/ Psychiatric Facilities

Programmes and activities for cognitive stimulation will be provided to slow down the deterioration of mental function of the residents.



## Night Respite

Night Respite is an overnight respite option for caregivers of persons living with dementia displaying sundowning behaviour. This gives them some time off from night-time caregiving duties.



## Nursing Care

This includes management of nasogastric tube, urine catheter, wound dressing, etc



## Physical and Social Activities

Maintenance exercises, outings, etc.

- For more information on Nursing Homes, please visit <https://www.aic.sg/care-services/nursing-home>
- For information on Nursing Homes providers, please visit <https://supportgowhere.life.gov.sg/caregiving/>
- For advice on the criteria and application for a Nursing Home service, patients or family may approach a Care Consultant at your nearest AIC Link — <https://www.aic.sg/aic-link>



## Accommodation

Agency	Address	Contact
Housing & Development Board (HDB) <a href="https://www.hdb.gov.sg/cs/infoweb/homepage">https://www.hdb.gov.sg/cs/infoweb/homepage</a>	HDB Hub 480 Lorong 6 Toa Payoh Singapore 310480 (weekdays: 8:30 am to 5:00 pm)	6490 1111
<b>Halfway Houses and Shelters</b> Residents are to abide by all the rules and regulations at the Halfway House (HWH).		
Buddhist: Green Haven <a href="https://sbws.org.sg/en/services-affiliates/social-welfare-and-community-services/green-haven/">https://sbws.org.sg/en/services-affiliates/social-welfare-and-community-services/green-haven/</a>	10 Admiralty Road East Singapore 759988	6490 1111
Christian: Breakthrough Missions <a href="https://www.breakthroughmissions.org.sg/">https://www.breakthroughmissions.org.sg/</a>	1 Cosford Road, Singapore 499547	6479 7734 6479 7756
Christian: Teen Challenge (Singapore) <a href="https://www.teenchallenge.org.sg/">https://www.teenchallenge.org.sg/</a>	735 Old Choa Chu Kang Road Singapore 699798	6793 7933
Christian: The Helping Hand <a href="https://thehelpinghand.org.sg/">https://thehelpinghand.org.sg/</a>	819 Upper Serangoon Road Singapore 534678	6283 2204
Christian: The New Charis Mission <a href="https://www.thenewcharission.org.sg">https://www.thenewcharission.org.sg</a>	Kembangan-Chai Chee Community Hub 11 Jalan Ubi Block 1 #01-01 Singapore 409074	6483 3707
Christian (Female): The Turning Point <a href="https://www.theturningpoint.org.sg/">https://www.theturningpoint.org.sg/</a>	341 Jamaica Road Singapore 757615	6257 8364
Christian: Watchman's Home <a href="https://watchmanhome.sg/">https://watchmanhome.sg/</a>	1035 Upper Changi Road Singapore 507676	9790 2060
Hindu & Sikh: HEB-Ashram Halfway House <a href="https://heb.org.sg/heb-ashram/">https://heb.org.sg/heb-ashram/</a>	30 Durban Road Singapore 759642	6753 9730
Muslim: Jamiyah Halfway House (Darul Islah) <a href="https://jhh.jamiyah.org.sg/">https://jhh.jamiyah.org.sg/</a>	352 Pasir Panjang Road Singapore 118694	6776 9101
Muslim: Pertapis Halfway House <a href="https://www.pertapis.org.sg/welfare-homes">https://www.pertapis.org.sg/welfare-homes</a>	50 Lorong 34 Geylang Singapore 398239	6746 4752
Secular (Female): Rise Above Halfway House	1 St. George's Lane Singapore 328047	6206 7440

Agency	Address	Contact
<b>Halfway Houses and Shelters</b>		
Residents are to abide by all the rules and regulations at the Halfway House (HWH).		
HCSA Highpoint <a href="https://hcsa.org.sg/programmes/hcsa-highpoint/">https://hcsa.org.sg/programmes/hcsa-highpoint/</a>	1 Lorong 23 Geylang Singapore 388352	6440 2444
Secular (Female): GEM New Start Centre Limited <a href="https://gemnsc.com/winners-home/">https://gemnsc.com/winners-home/</a>	No 2 Springleaf View Singapore 787908	6266 3302 / 6266 3310
Secular (Female): iC@RE HUB <a href="https://www.icarehub.org.sg/">https://www.icarehub.org.sg/</a>	Call hotline for information	9060 5845
Secular (Transgender): The T Project <a href="https://www.thetprojectsg.org/">https://www.thetprojectsg.org/</a>	7 Race Course Lane #03-01 Singapore 218734	8181 7584

## MSF Shelter Options

If you face housing issues after discharge from prison, your Family Service Centre (FSC) social worker can assist you to apply to a suitable shelter.

Visit <https://www.msf.gov.sg/our-services> to find your nearest FSC, or call the MSF Hotline (1800-111-2222) for advice.

You may be referred to the following possible shelter options depending on your need.



### Safe Sound Sleeping Places (S3Ps)

- Interim overnight shelters in community-owned premises.
- Provides safe shelter in communal setting while individuals seek formal assistance from help agencies and/or longer-term shelters.
- Food is not provided.

### Transitional Shelters (TSes)

- Provide temporary accommodation to homeless families/individuals who have exhausted all other means of accommodation.
- Provide onsite social work intervention to address the complex needs of admitted families/individuals to achieve long-term and stable housing.
- Food is not provided.

### Sheltered Homes (SHs)

- Provide accommodation to ambulant seniors (aged 60 and above) who have no alternative living arrangements.
- These seniors are capable of taking care of his/ her activities of daily living (ADL) and unable to live with their families because of a breakdown in relationships.
- Food is provided in some Homes.

### Welfare Homes (WHs)

- Provide long-term care and rehabilitation for destitute persons with no means of support and who may face challenges living independently in the community.
- Admissions come under the Destitute Persons Act (voluntary admissions are possible).
- Food is provided.



# Accommodation

## Moving to long-term stable housing

- Social workers from these shelters/FSCs will work with you on the longer-term housing options.
- This includes application for Public Rental HDB flats (if eligible), finding a job or skills training to help you transit into stable long-term housing.

## Tips for persons with mental health concerns or addiction

- If you have mental health issues, or have active addiction, you may make a self-referral (or through your social worker) to Welfare Homes by scanning the following QR code or calling the MSF ComCare Hotline (1800-222-0000).
- Some of these Welfare Homes are located at Pelangi Village (Buangkok Green).

### Welfare Home Application Form



Please scan the QR code to access the Welfare Home Application form.

## Transitional Shelters

Accommodation for homeless persons with social work support to obtain stable housing and employment.

- Suitable if you can live independently in a communal shelter setting (i.e. does not require close supervision or care)
- HDB flat setting, co-sharing required



## Referral Process

Referral from your social worker is required. If you do not have a social worker, visit <https://www.msf.gov.sg/our-services> to find your nearest FSC, or call the MSF Hotline (1800-111-2222) for advice.

## List of Transitional Shelters

- New Hope Transit Point @ Jalan Kukoh
- New Hope Transit Point @ 1 Spooner\*
- Allkin Transitional Shelter (Individuals) – Spooner Road\*

\*To be relocated to Ang Mo Kio Ave 8 from Dec 2024 onwards

# Community and Family Services



Agency	Address	Contact
Allkin Singapore <a href="https://www.allkin.org.sg/">https://www.allkin.org.sg/</a>	Various Family Service Centres	contact@allkin.org.sg
Care Community Services Society <a href="https://www.ccscscares.sg/">https://www.ccscscares.sg/</a>	CarePoint 103 Lavender Street #01-02 Singapore 338725	6950 7500
Centre for Fathering <a href="https://fathers.com.sg/">https://fathers.com.sg/</a>	Dads Adventure Hub 1 Woodlands Road #04-03 Singapore 678899	6769 1238
Family Service Centres <a href="https://www.msf.gov.sg/our-services">https://www.msf.gov.sg/our-services</a>	Various Locations – Please refer to website	–
FAM @ FSCs <a href="http://www.msf.gov.sg/dfcs/strengtheningfamilyservice/">www.msf.gov.sg/dfcs/strengtheningfamilyservice/</a>	Various Locations – Please refer to website	1800 111 222
Fei Yue Community Services <a href="https://fyics.org/family-service-centres/">https://fyics.org/family-service-centres/</a>	Various Locations – Please refer to website	6569 0381 (Bukit Batok) 6690 100 (Champions Way) 6762 5215 (Choa Chu Kang) 6416 2162 (Yew Tee) 6267 2900 (Taman Jurong)
Focus on the Family Singapore <a href="http://www.family.org.sg">www.family.org.sg</a>	Junction 8 Office Tower 9 Bishan Place #08-03 Singapore 579837	6336 1444
Lakeside Family Services (TJ Haven) <a href="https://lakeside.org.sg/">https://lakeside.org.sg/</a>	The Agape 21 Yung Ho Road #03-01 Singapore 618593	6265 6522
Life Community Services Society <a href="https://life-community.org/">https://life-community.org/</a>	114 Lavender Street #02-52 CT Hub 2 Singapore 338729	6387 3700
Lions Befrienders Service Association (Singapore) [For Seniors] <a href="https://www.lionsbefrienders.org.sg/">https://www.lionsbefrienders.org.sg/</a>	Blk 130 Bukit Merah View #01-358 Singapore 150130	1800 375 8600



## Community and Family Services

Agency	Address	Contact
Lutheran Community Care Services Ltd <a href="https://lccs.org.sg/">https://lccs.org.sg/</a>	Bukit Merah Community Hub 3779 Jalan Bukit Merah #02-01 Singapore 159462	6441 3906
M <sup>3</sup> <a href="https://www.m3.gov.sg/">https://www.m3.gov.sg/</a>	Wisma Geylang Serai 1 Engku Aman Road Level 2 Singapore 490223	-
New Life Stories <a href="https://www.newlifestories.org.sg/">https://www.newlifestories.org.sg/</a>	64 Kallang Bahru #01-375 Singapore 330064	6386 7688
Singapore Children's Society <a href="https://www.childrensociety.org.sg/">https://www.childrensociety.org.sg/</a>	Various Locations – Please refer to website	6273 2010
The Salvation Army <a href="https://www.salvationarmy.org.sg/">https://www.salvationarmy.org.sg/</a> <a href="http://www-prison-support-services/">www-prison-support-services/</a>	7 Upp Changi Rd North Singapore 507705	9248 5336 (Whatsapp Hotline)



## ComCare

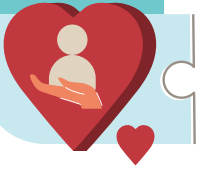
Social assistance for low-income individuals and families

☎ 1800 - 222 0000

Social Service Offices	Address
Social Service Office @ Ang Mo Kio	6A Ang Mo Kio St 53 Ang Mo Kio 3G Centre Singapore 569208
Social Service Office @ Bedok	21 Bedok North St 1 #01-02 Singapore 469659
Social Service Office @ Boon Lay	NKF Integrated Renal Centre 500 Corporation Road, #01-01 Singapore 649808
Social Service Office @ Bukit Batok	Blk 369 Bukit Batok St 31, #01-505 Singapore 650369
Social Service Office @ Bukit Merah	Bukit Merah Community Hub 3779 Jalan Bukit Merah #01-01, Singapore 159462
Social Service Office @ Bukit Panjang	Blk 232 Pending Road, #01-29 Singapore 670232
Social Service Office @ Clementi	Blk 358 Clementi Ave 2, #01-285 Singapore 120358
Social Service Office @ Chua Chu Kang	8A Teck Whye Lane, Singapore 681008



Social Service Offices	Address
Social Service Office @ Geylang Serai	Singapore Post Centre 10 Eunos Road 8 #12-02, Singapore 408600
Social Service Office @ Hougang	Blk 662 Hougang Ave 4, #01-413 Singapore 530662
Social Service Office @ Jalan Besar	Jalan Besar Community Club 69 Jellicoe Rd, #01-03 Singapore 208737
Social Service Office @ Jurong East	Devan Nair Institute for Employment and Employability 80 Jurong East St 21 #01-07 Singapore 609607
Social Service Office @ Kreta Ayer	Kreta Ayer Community Club 28A Kreta Ayer Road #01-03, Singapore 088995
Social Service Office @ Pasir Ris	120 Pasir Ris Central #01-16 Pasir Ris Sports Centre Singapore 519640
Social Service Office @ Punggol	ServiceSG Centre One Punggol One Punggol Drive, #01-01 Singapore 828629
Social Service Office @ Queenstown	Blk 40 Margaret Drive, #02-01 Singapore 140040
Social Service Office @ Sembawang	Blk 315 Sembawang Vista, #01-173 Singapore 750315
Social Service Office @ Sengkang	Blk 261C Sengkang East Way, #01-506 Singapore 543261
Social Service Office @ Serangoon	Blk 332 Serangoon Ave 3, #01-257 Singapore 550332
Social Service Office @ Taman Jurong	301A Corporation Drive, Singapore 619733
Social Service Office @ Tampines	ServiceSG Centre Our Tampines Hub 1 Tampines Walk, #01-21 Singapore 528523
Social Service Office @ Toa Payoh	HDB Hub Bizthree 490 Lorong 6 Toa Payoh #07-11 Singapore 310490
Social Service Office @ Woodlands	900 South Woodlands Drive #06-13 Woodlands Civic Centre Singapore 730900
Social Service Office @Yishun	Blk 746 Yishun Street 72, #01-127 Singapore 760746



# SERVICE SG

Visit ServiceSG Centre for guidance on government services that may be relevant to you:

## ServiceSG can help you with:

- Set up or reset your Singpass password.
- Apply for Comcare and receive financial support.
- Apply or renew your CHAS card to enjoy subsidies on medical and dental care.
- Re-register your NRIC or renew your passport.
- Check your Central Provident Fund (CPF) balance and statement.
- Apply for new or rental home via Housing Development Board's (HDB).
- Get career and skills guidance from career coaches.

## Visit Us

### ServiceSG Centres

Opening hours: Mon - Sun: 9am to 6pm | Closed on Public Holidays

#### ServiceSG Centre One Punggol

#01-01, 1 Punggol Drive, Singapore 828629

#### ServiceSG Centre Our Tampines Hub

#01-21, 1 Tampines Walk, Singapore 528523

### ServiceSG@CCs

Opening hours: Mon - Sun: 10am to 6pm | Closed on Public Holidays

#### ServiceSG@Bukit Canberra

Bukit Canberra Integrated Sports & Community Hub

#01-62, 21 Canberra Link, Singapore 756973

#### ServiceSG@Nee Soon Central Community Club

Northpoint City (Near Berth B8 in Yishun Bus Interchange), #01-201, 1 North Point Drive, Singapore 768019

#### ServiceSG@Kampong Chai Chee Community Club

Heartbeat@Bedok

#01-31, 11 Bedok North Street 1, Singapore 469662

#### ServiceSG@The Frontier Community Club

The Frontier Community Place

#01-01, 60 Jurong West Central 3, Singapore 648346

#### ServiceSG@Keat Hong Community Club

#01-01, 2 Choa Chu Kang Loop, Singapore 689687



Scan here to follow ServiceSG on Facebook or visit [go.gov.sg/servicesgfb](https://go.gov.sg/servicesgfb)



Scan here for more information or visit [go.gov.sg/servicesgweb](https://go.gov.sg/servicesgweb)